



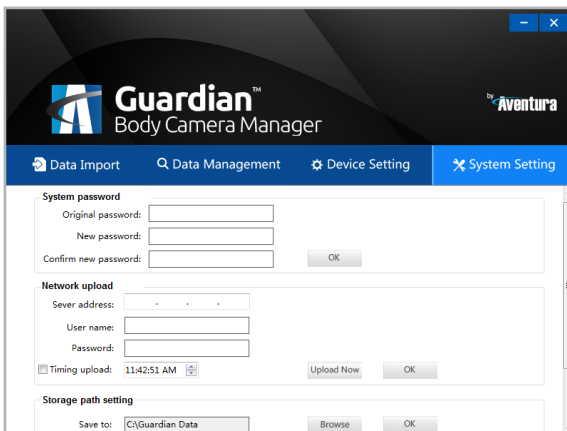
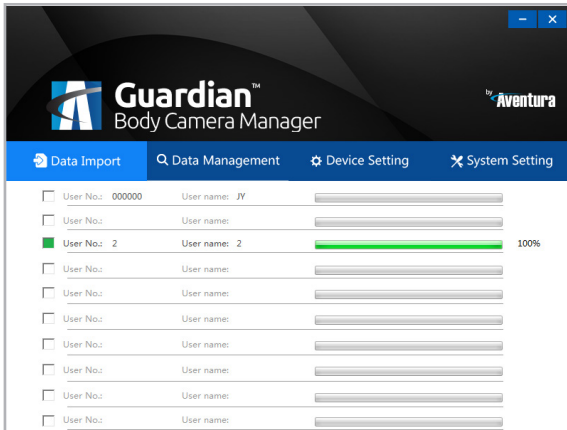
# Guardian™ GPC-VMS

## Body Camera Management Software



### KEY FEATURES

- + Manages over 10,000 Cameras
- + Syncs Video, Photo, and Audio Files
- + User Management
- + Data Reporting
- + Customizable Interface
- + Easy to Install and Manage
- + Encrypted Data
- + Time stamping



### SPECIFICATIONS

<b>Operation</b>	Supports automatic sync and backup from attached body cameras
<b>Media Data Functions</b>	View, search, copy, download, and delete files
<b>Platform</b>	Windows
<b>Camera Capacity</b>	Supports up to 10,000 body worn cameras
<b>Configurable UI</b>	Yes (.NET)
<b>Data Encryption</b>	Yes
<b>Data Reporting</b>	Export to CSV, PDF
<b>Time/Date Stamping</b>	Yes
<b>Warranty</b>	3 Years
<b>Part Number</b>	GPC-VMS

\* The latest product information / specification can be found at [www.guardianbodycam.com](http://www.guardianbodycam.com)

### SYSTEM REQUIREMENTS

Hardware	Min. Requirements	Recommended
CPU	Single-core CPU 2.0GHz	Dual-core CPU, 2.0GHz or above
Memory (RAM)	2 GB	2GB or above
Storage (HD)	500GB	1TB or above

### Available Body Cams



\* Data recorded on an SD memory card may be lost or damaged by data access during power-off, mechanical shock, memory card detachment, or other operations. Data loss or damage can also occur when a memory card reaches end of life, which varies according to operational conditions. No guarantee is given against damage (including passive damage).